

È [d çæã È[˘]
è | È | À | È | Ì | D | H | È | F | È | Á
^ È æ | È { O { [d çæã È[˘]

Ú Ü Z Ò S Y Ö Ö Þ Ö K Ó Ó Í G E Ü Í H Ó Í

Y Ö U S Á Ö

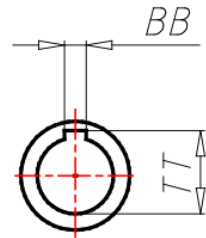
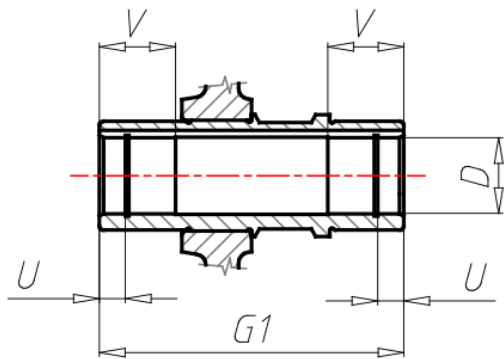
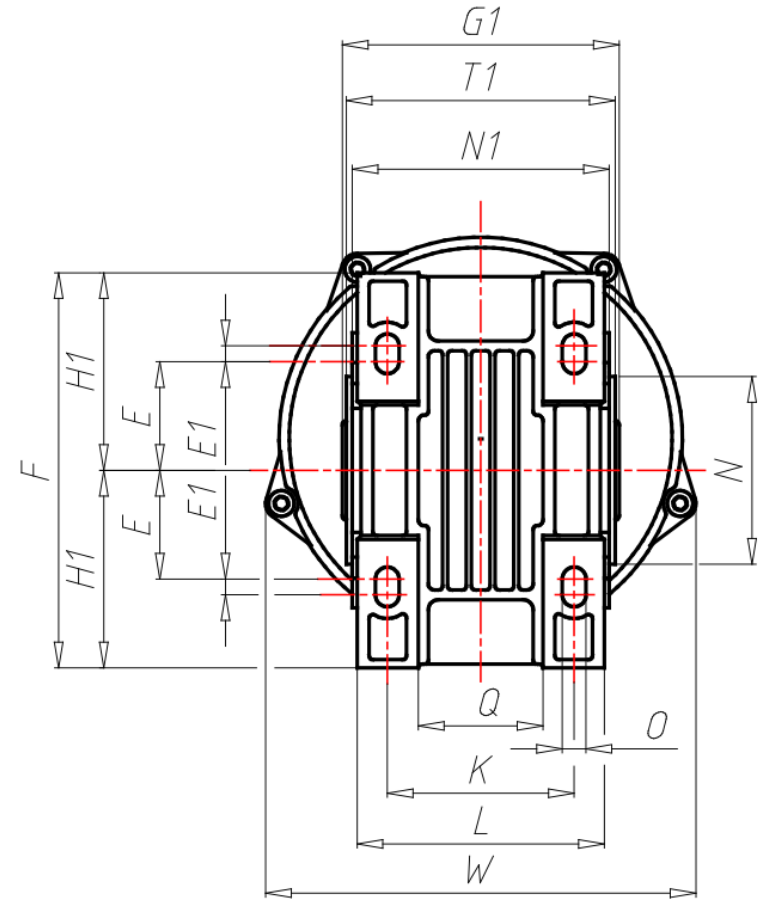
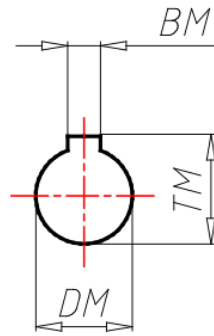
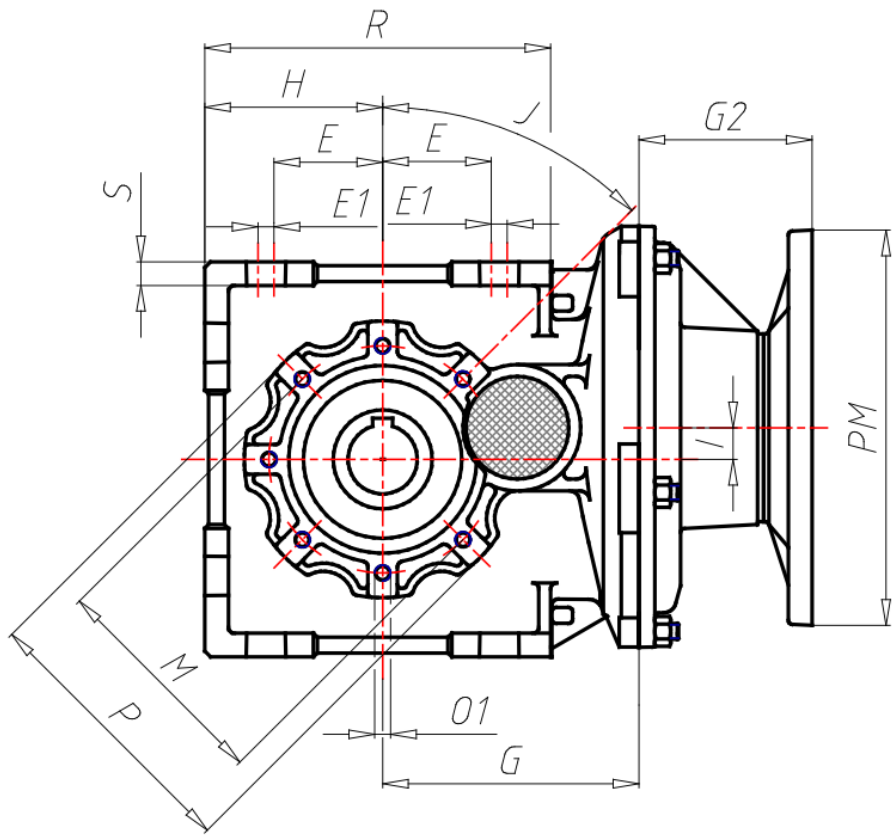


ÖÖË ÒÁÒÔÏ ÒÛÏ ÒÁÏ ÿÏ Öÿÿ

| | |
|---|-------------|
| GR Size | A52 |
| VERS Gear box version | U-Universal |
| VERSALBE Output shaft version | C-Hollow |
| RAP Ratio | |
| PAM Input PAM flange | 63 B5 |
| ACU1 Output shaft (d*l) | 25 |
| TFU Output flange | NO |
| DFU Output flange dimension (d) | - |
| PFU Output flange position | - |
| BR Torque arm | No |
| PBR Torque arm position | - |
| AL Low speed shaft accessory (d) | No |
| PAL Low speed shaft accessory position | - |
| TIP Motor/Inverter Motor | No |
| GRA Motor size | - |
| RAF Cooling | - |
| FC Motor execution | - |
| ALI Supply | - |
| GIRI Speed Range | - |
| POTE Power Group | - |
| CTRL Manual Adjustment Control | - |
| MODU Expansion modules | - |
| TF Break type | - |
| AF Brake power supply | - |
| COP Terminal box cover | - |
| CVE Fan cover | - |
| MOR Terminal box cover position | - |
| BB | 8 |
| BM | 4 |
| BM1 | - |
| D | 25 |

| | |
|------------|--------------|
| DM | 11 |
| DM1 | - |
| E | 55 |
| EE | - |
| E1 | - |
| F | 160 |
| G | 98 |
| G1 | 112 |
| G2 | 55 |
| H | 80 |
| H1 | 80 |
| I | 84.2 |
| J | 45 |
| K | 80 |
| L | 100 |
| LL | - |
| M | 95 |
| N | 80 |
| N1 | 102 |
| O | 9 |
| O1 | M8x14 |
| P | 110 |
| PM | 140 |
| PM1 | - |
| Q | 51 |
| R | 153 |
| S | 10 |
| T1 | 108 |
| TM | 12.8 |
| TT | 28.3 |
| U | - |

| | | |
|------------|------------|--|
| V | 30 | |
| W | 152 | |
| TM1 | - | |
| FF1 | - | |
| X | - | |
| Y | - | |



ΑΕΣΟΪΟΥΪΘΕ

