

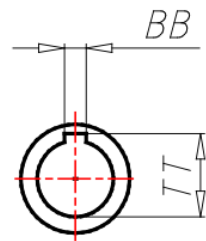
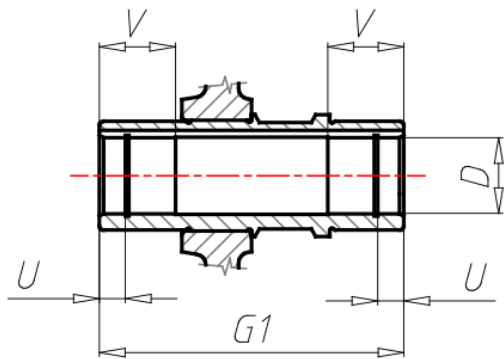
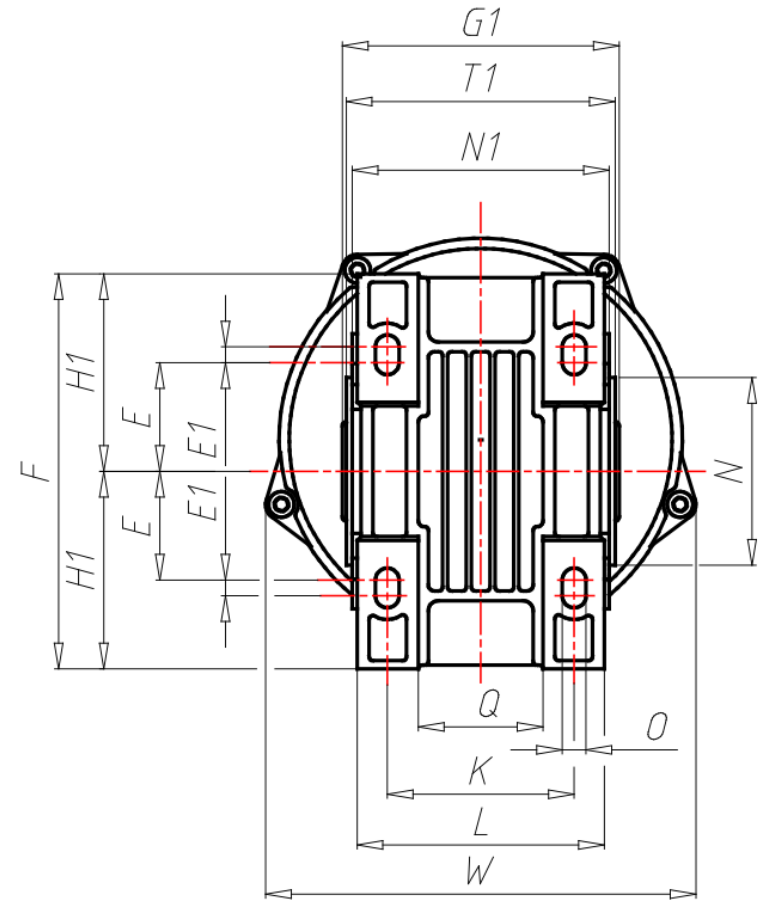
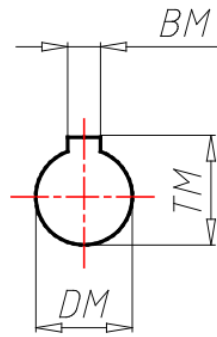
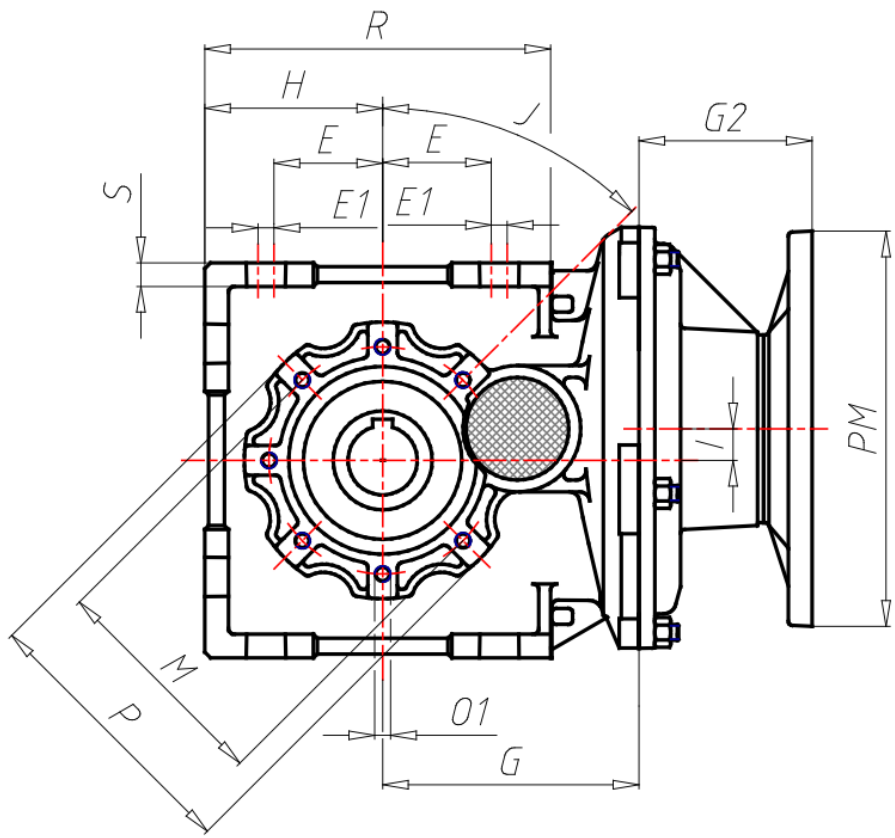


## ÖÖË ÒÁÒÔÏ ÒÛÏ ÒÁÏ ÿT ÖÛÿ

GR Size	A42
VERS Gear box version	U-Universal
VERSALBE Output shaft version	C-Hollow
RAP Ratio	
PAM Input PAM flange	63 B5
ACU1 Output shaft (d*I)	20
TFU Output flange	NO
DFU Output flange dimension (d)	-
PFU Output flange position	-
BR Torque arm	No
PBR Torque arm position	-
AL Low speed shaft accessory (d)	No
PAL Low speed shaft accessory position	-
TIP Motor/Inverter Motor	No
GRA Motor size	-
RAF Cooling	-
FC Motor execution	-
ALI Supply	-
GIRI Speed Range	-
POTE Power Group	-
CTRL Manual Adjustment Control	-
MODU Expansion modules	-
TF Break type	-
AF Brake power supply	-
COP Terminal box cover	-
CVE Fan cover	-
MOR Terminal box cover position	-
BB	6
BM	4
BM1	-
D	20

<b>DM</b>	<b>11</b>
<b>DM1</b>	<b>-</b>
<b>E</b>	<b>45</b>
<b>EE</b>	<b>-</b>
<b>E1</b>	<b>-</b>
<b>F</b>	<b>130</b>
<b>G</b>	<b>95</b>
<b>G1</b>	<b>100</b>
<b>G2</b>	<b>55</b>
<b>H</b>	<b>65</b>
<b>H1</b>	<b>65</b>
<b>I</b>	<b>57</b>
<b>J</b>	<b>45</b>
<b>K</b>	<b>73.5</b>
<b>L</b>	<b>90</b>
<b>LL</b>	<b>-</b>
<b>M</b>	<b>85</b>
<b>N</b>	<b>70</b>
<b>N1</b>	<b>92</b>
<b>O</b>	<b>9</b>
<b>O1</b>	<b>M8x12</b>
<b>P</b>	<b>100</b>
<b>PM</b>	<b>140</b>
<b>PM1</b>	<b>-</b>
<b>Q</b>	<b>45</b>
<b>R</b>	<b>127.5</b>
<b>S</b>	<b>8</b>
<b>T1</b>	<b>97</b>
<b>TM</b>	<b>12.8</b>
<b>TT</b>	<b>22.8</b>
<b>U</b>	<b>-</b>

<b>V</b>	<b>30</b>	
<b>W</b>	<b>152</b>	
<b>TM1</b>	-	
<b>FF1</b>	-	
<b>X</b>	-	
<b>Y</b>	-	



ΑΕΣΟΪΟΥΪΘΕ

