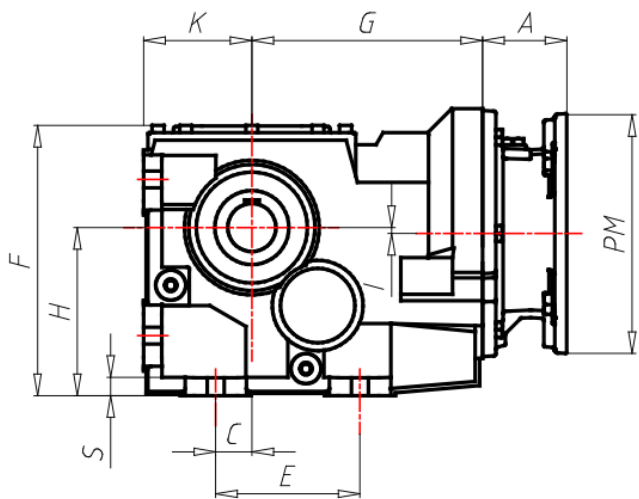


ÖÖË ÒÁÒÔÏ ÒÏË ÒÁÏ ÿÏ Öÿ

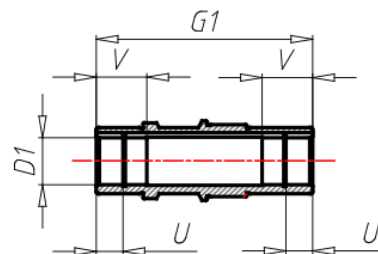
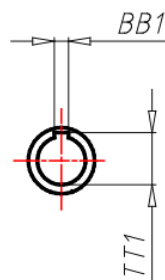
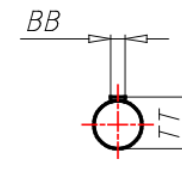
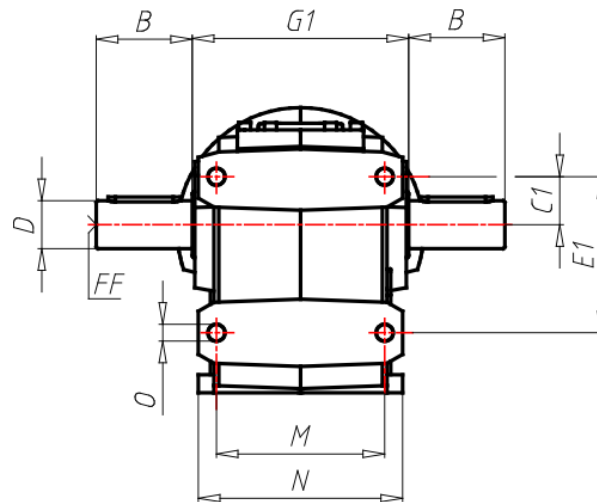
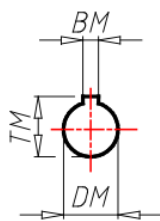
GR Size	123
VERS Gear box version	U-Universal
VERSALBE Output shaft version	C-Hollow
RAP Ratio	
PAM Input PAM flange	90 B5
ACU1 Output shaft (d*l)	60
TFU Output flange	NO
DFU Output flange dimension (d)	-
PFU Output flange position	-
AL Low speed shaft accessory (d)	No
PAL Low speed shaft accessory position	-
BR Torque arm	No
PBR Torque arm position	-
CP Protection cover position	NO
TIP Motor/Inverter Motor	No
GRA Motor size	-
RAF Cooling	-
FC Motor execution	-
ALI Supply	-
GIRI Speed Range	-
POTE Power Group	-
CTRL Manual Adjustment Control	-
MODU Expansion modules	-
TF Break type	-
AF Brake power supply	-
RF Brake rectifier	-
ACC Accessories	-
COP Terminal box cover	-
SER Forced ventilation	-
CVE Fan cover	-
MOR Terminal box cover position	-

A	61	
B	-	
BB	-	
BB1	18	
BM	8	
BM1	-	
C	-	
C1	78	
D	-	
D1	60	
DM	24	
DM1	-	
E	-	
EE	-	
E1	220	
F	341	
F1	-	
FF	-	
FF1	-	
G	246	
G1	240	
H	212	
H1	-	
I	33.5	
K	132	
K1	-	
LL	-	
M	180	
N	230	
O	22	
PM	200	

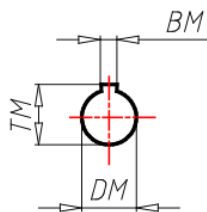
PM1	-
S	22
TT	-
TT1	64.4
TM	27.3
TM1	-
U	28
V	70
X	-
Y	-



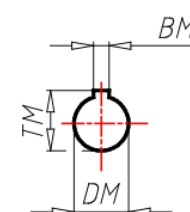
B/PB...F



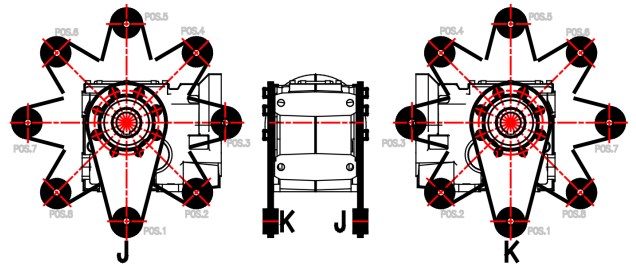
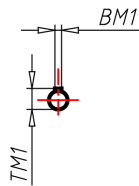
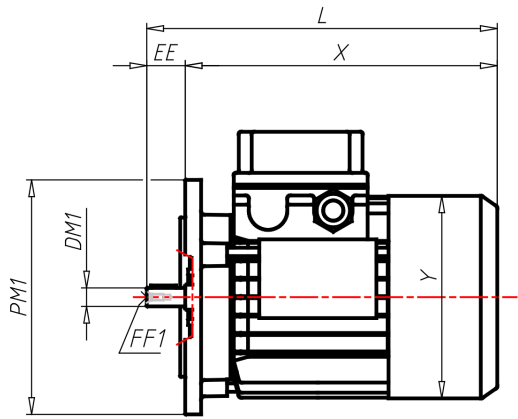
B/PB...S



B/PB...U



ΑΕΣΟΪΟΥ ΪΟΕ



B5

