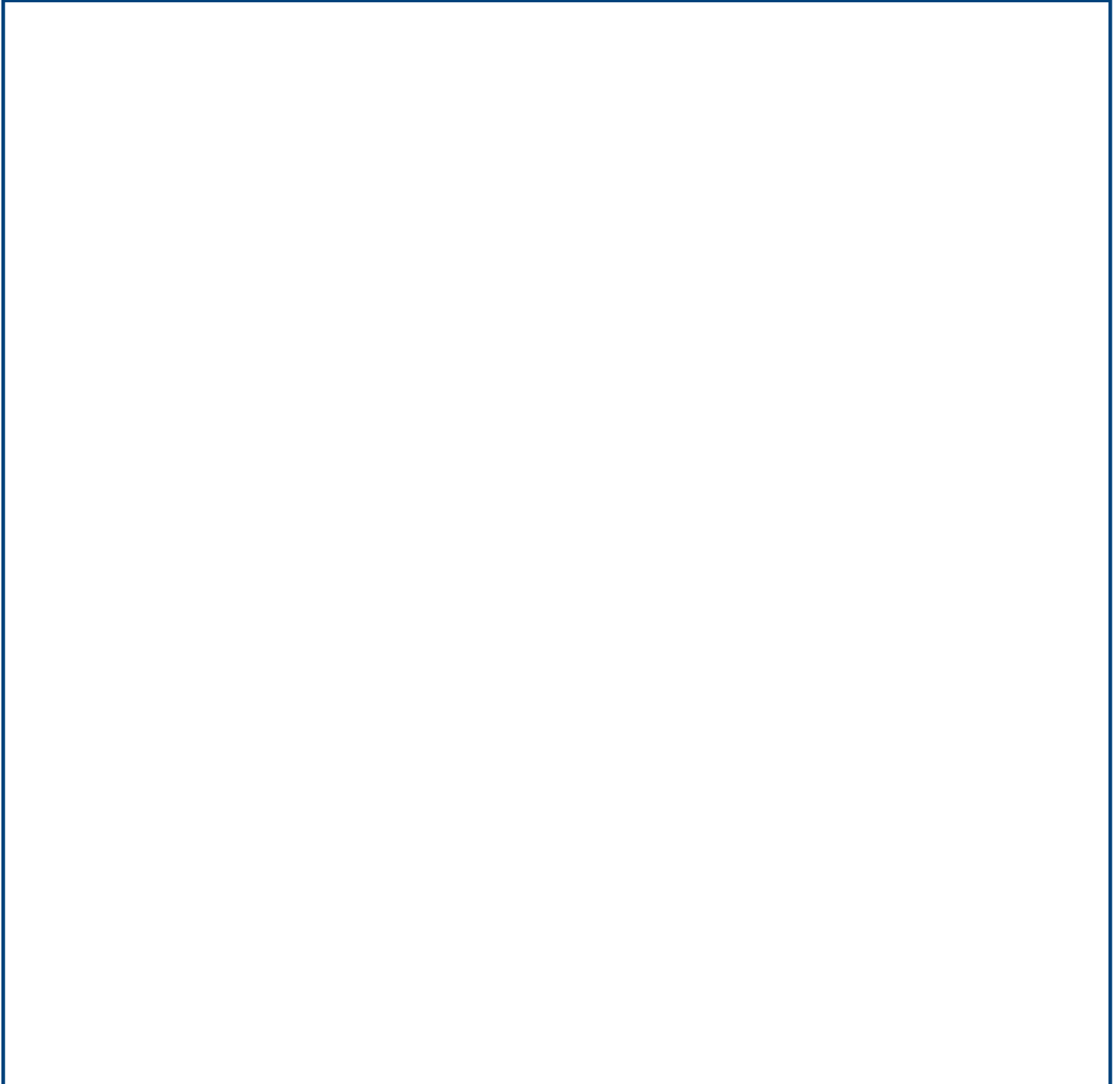


č | ě | ï | á | ě | ï | d | ě | ě | f | ě | á | ě | æ | k | s | t | o | { | [| ě | ç | æ | ě | ě | v

T U V U Ü Ö Ö W S V U Ü K N M R V - 0 3 0 / 0 5 0

{ | [| ě | ^ | á | v | \ | ě | ! | Á | [| á | , | 5 | b | ^ | Á | ě | H Ó F I D

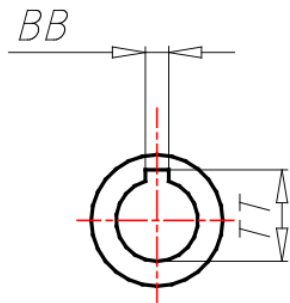
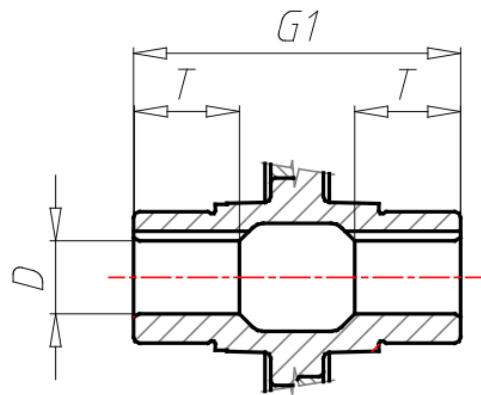
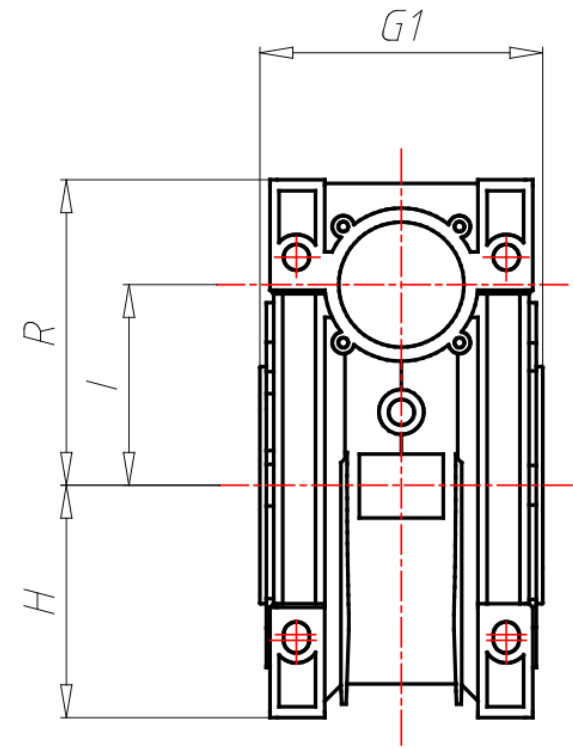
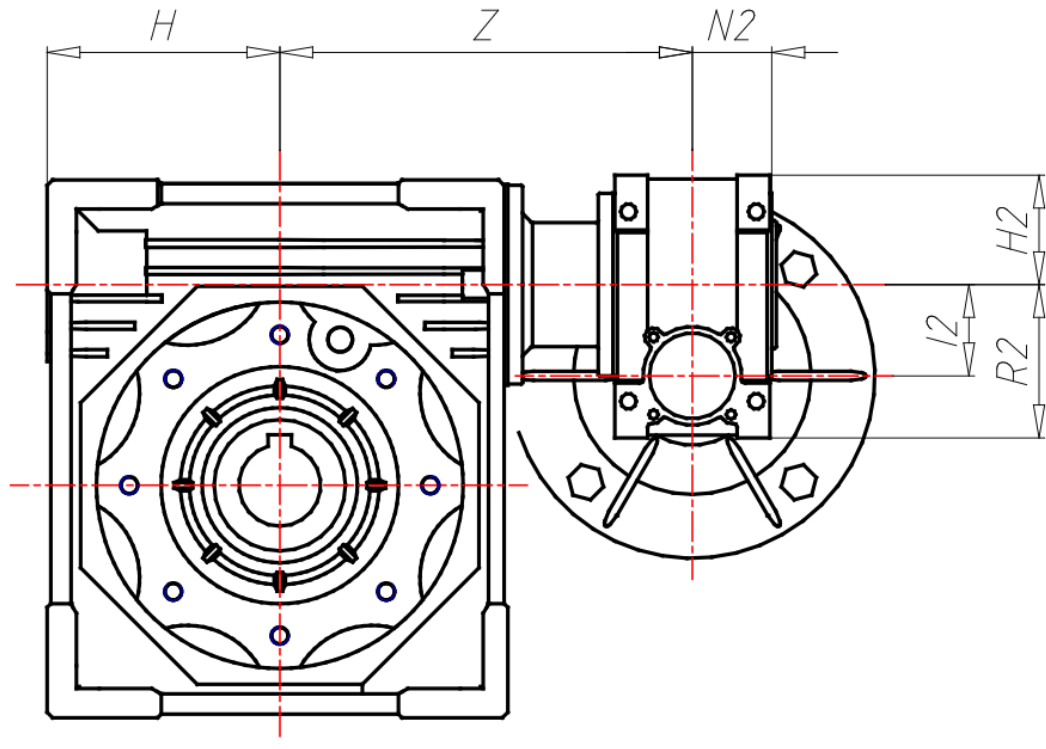
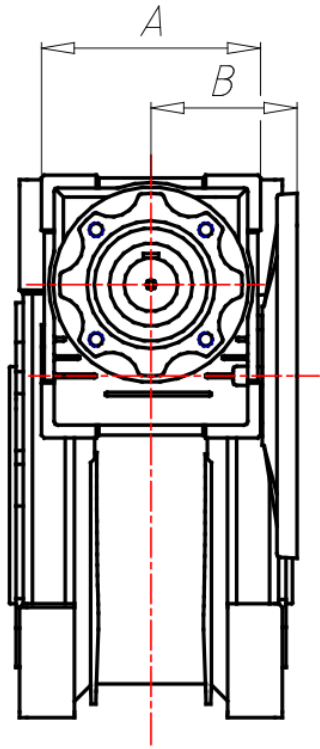
WIDOK 3D



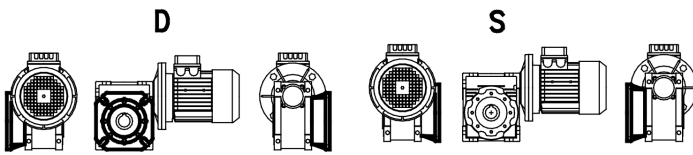
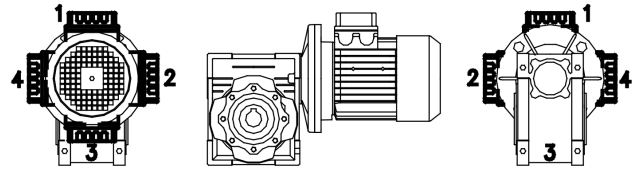
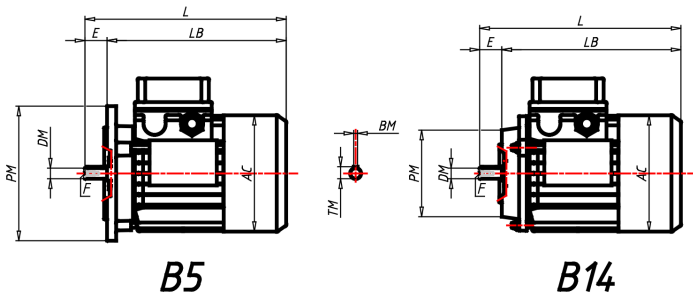
ÖÖË ÒÁÒÔÏ ÒÛÏ ÒÁÏ ÏÏÏ

GR Size	030-050
ES Execution	AS1
PAM Input PAM flange	63 B14
ACU1 Output hole shaft gear unit 1 (d)	14
VB1 Double input shaft gear unit 1	NO
ACU2 Output hole shaft gear unit 2 (d)	25
VB2 Double input shaft gear unit 2	NO
TFU Output flange gear unit 2	NO
DFU Output flange dimension gear unit 2 (d)	-
PFU Output flange position gear unit 2	-
AL2 Output hole shaft gear unit 2 (d)	No
PAL Output shaft position gear unit 2	-
CAP Cover gear unit 2	No
TIP Motor/Inverter Motor	T-Three phase
GRA Motor size	063
RAF Cooling	IC411-Self-Ventilated
FC Motor execution	B14
ALI Supply	-
GIRI Speed Range	-
POTE Power Group	-
CTRL Manual Adjustment Control	-
MODU Expansion modules	-
TF Break type	-
AF Brake power supply	-
COP Terminal box cover	Aluminium
CVE Fan cover	Standard
MOR Pos. terminal box	1
A	80
AC	121
B	55

BB	8	
BM	4	
D	25	
DM	11	
E	23	
F	M4x10	
G1	92	
H	60	
H2	40	
I	50	
I2	30	
L	211	
LB	188	
N2	29	
PM	90	
R	84	
R2	57	
T	30	
TM	12.5	
TT	28.3	
Z	132	



DESIGN



DESIGN

Ö [Á ^ * ~ | æ ß à i [ç , Á [ç | ^ á \ ç i 5 , Á ç • ð Á ä Á ç | , } ä ä Ö ç ^ Á & @ & } ^ Á æ ß ç { æ Á Á ! , ä æ ç & @ & } ^ & ç

@ ç | ç ^ à • ^ • ç { ç | ç } ä ç | ç , } ä ç | ç { ç | ç } ä ç | ç , } ä ç | ç ç | ç