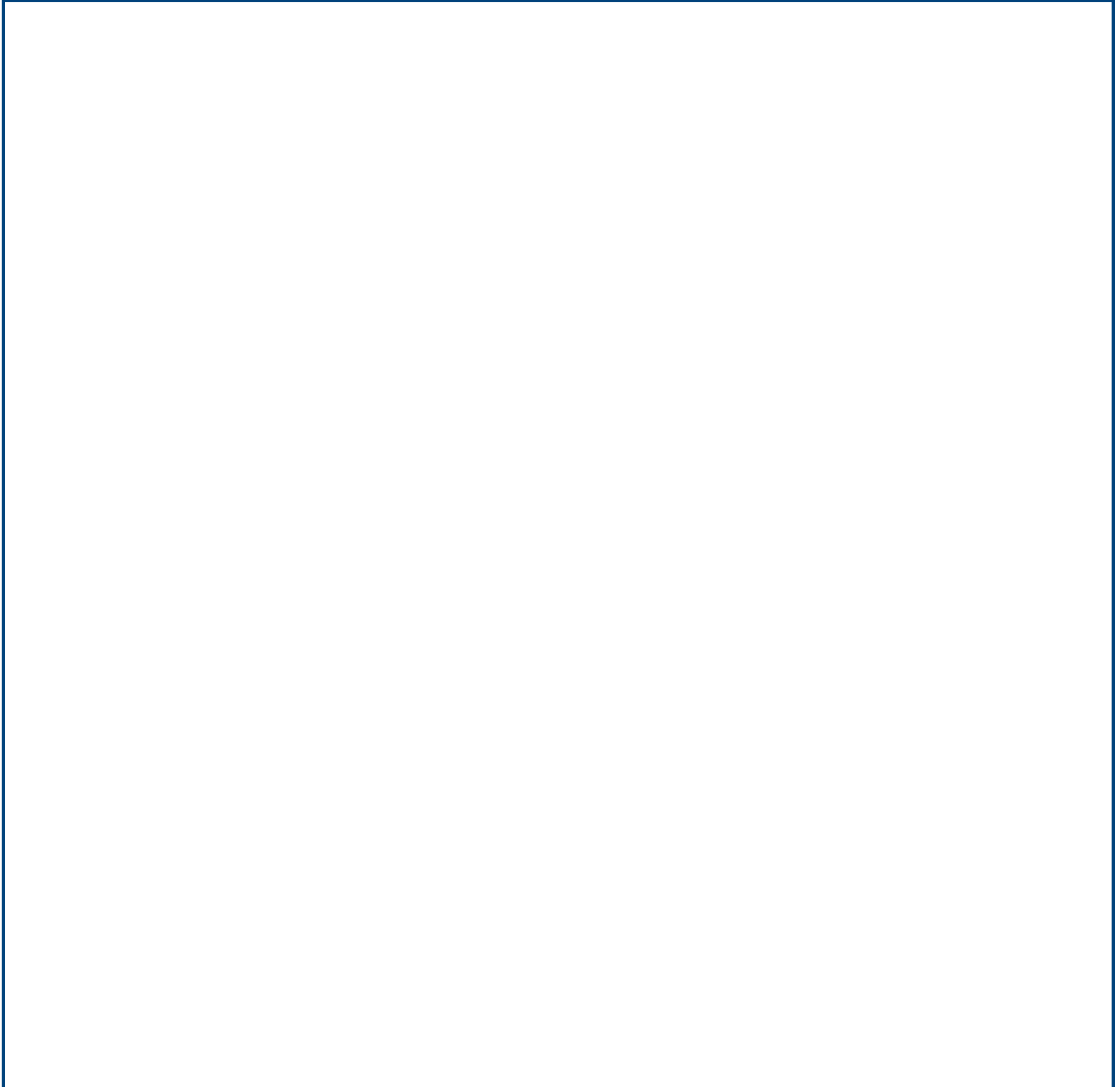


ç|ÈI Ì ÁÈ Ì DÌ HÈ FÈ I ÁÈ æ|K| { O { [ d çæã È~

T UVUÜÒÖWSVUÜKNMRV-063/130

{ [ d !^â^\ d !Á [ å, 5b ^ ÁÜ FÓFI D

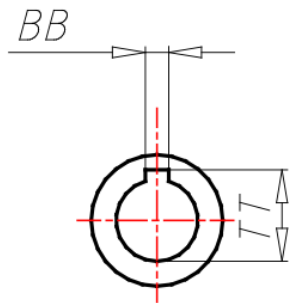
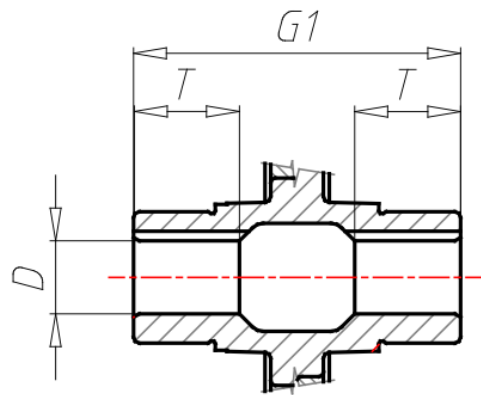
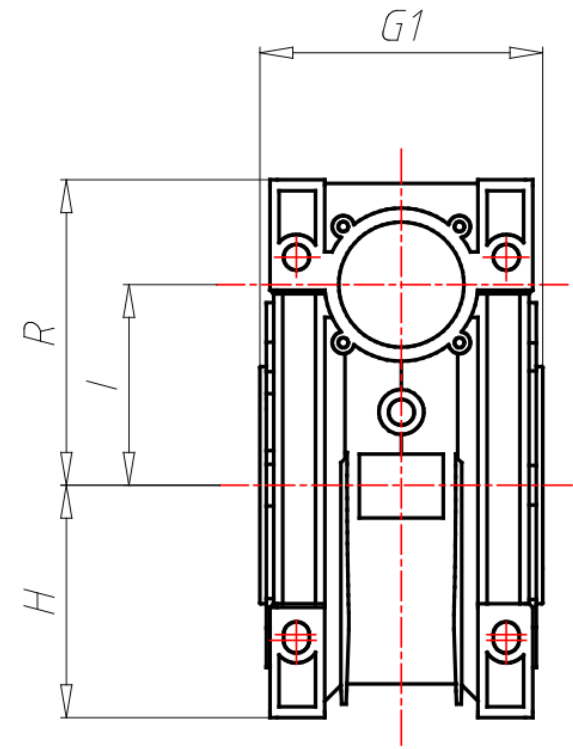
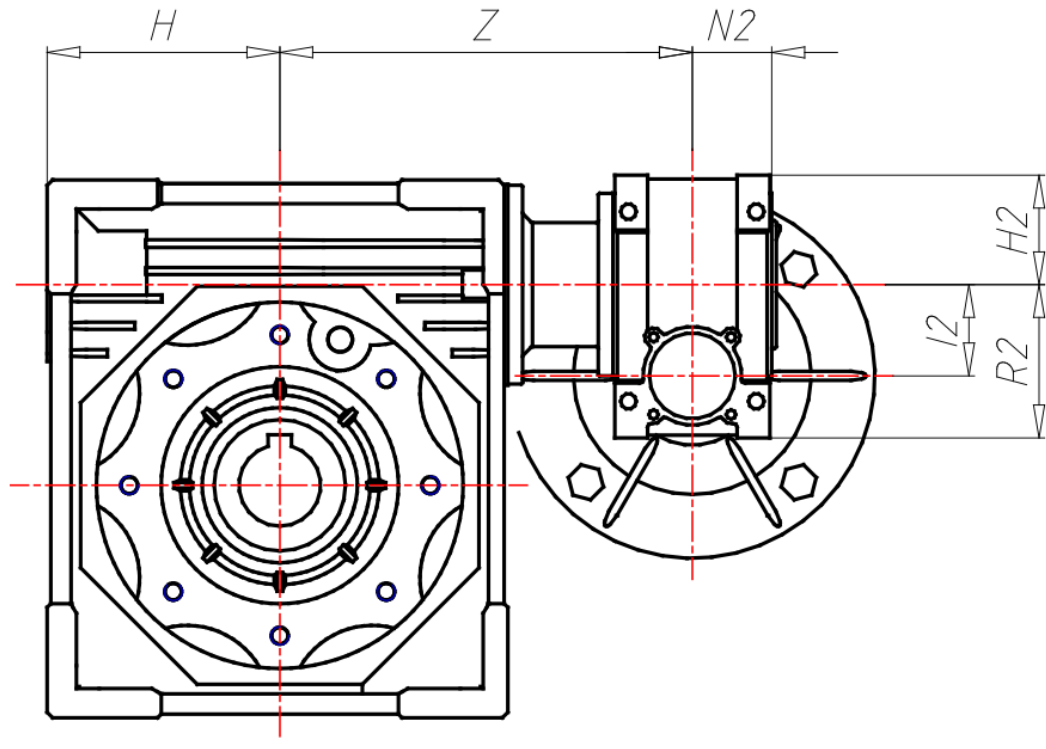
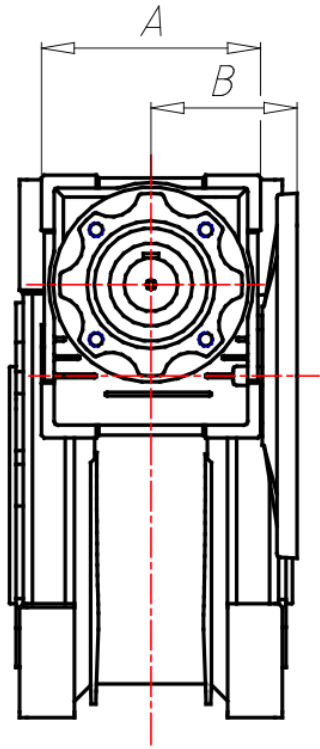
## WIDOK 3D



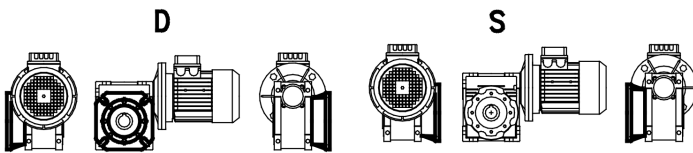
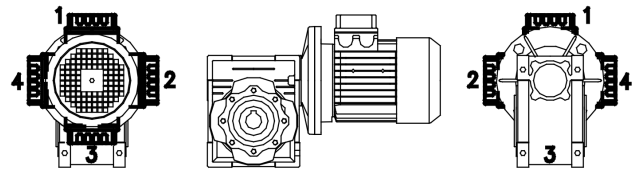
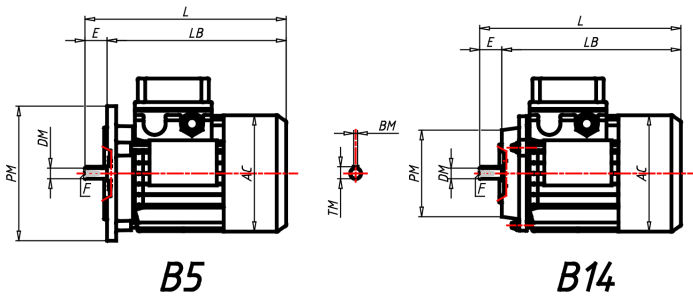
## ÖÖË ÒÁÒÔÏ ÒÛÏ ÒÁÛ ÆÛÛ

|  |                              |
|--|------------------------------|
| <b>GR Size</b>                                     | <b>063-130</b>               |
| <b>ES Execution</b>                                | <b>AS1</b>                   |
| <b>PAM Input PAM flange</b>                        | <b>71 B14</b>                |
| <b>ACU1 Output hole shaft gear unit 1 (d)</b>      | <b>25</b>                    |
| <b>VB1 Double input shaft gear unit 1</b>          | <b>NO</b>                    |
| <b>ACU2 Output hole shaft gear unit 2 (d)</b>      | <b>45</b>                    |
| <b>VB2 Double input shaft gear unit 2</b>          | <b>NO</b>                    |
| <b>TFU Output flange gear unit 2</b>               | <b>NO</b>                    |
| <b>DFU Output flange dimension gear unit 2 (d)</b> | <b>-</b>                     |
| <b>PFU Output flange position gear unit 2</b>      | <b>-</b>                     |
| <b>AL2 Output hole shaft gear unit 2 (d)</b>       | <b>NO</b>                    |
| <b>PAL Output shaft position gear unit 2</b>       | <b>-</b>                     |
| <b>CAP Cover gear unit 2</b>                       | <b>NO</b>                    |
| <b>TIP Motor type</b>                              | <b>T-Three phase</b>         |
| <b>GRA Motor size</b>                              | <b>071</b>                   |
| <b>RAF Cooling</b>                                 | <b>IC411-Self-Ventilated</b> |
| <b>FC Motor execution</b>                          | <b>B14</b>                   |
| <b>TF Break type</b>                               | <b>-</b>                     |
| <b>AF Brake power supply</b>                       | <b>-</b>                     |
| <b>COP Terminal box cover</b>                      | <b>Aluminium</b>             |
| <b>CVE Fan cover</b>                               | <b>Default</b>               |
| <b>MOR Terminal box cover position</b>             | <b>1</b>                     |
| <b>A</b>   | <b>144</b>                   |
| <b>AC</b>  | <b>139</b>                   |
| <b>B</b>   | <b>95</b>                    |
| <b>BB</b>  | <b>14</b>                    |
| <b>BM</b>  | <b>5</b>                     |
| <b>D</b>   | <b>45</b>                    |
| <b>DM</b>  | <b>14</b>                    |
| <b>E</b>   | <b>30</b>                    |

|           |                |
|-----------|----------------|
| <b>F</b>  | <b>M5x12.5</b> |
| <b>G1</b> | <b>170</b>     |
| <b>H</b>  | <b>147.5</b>   |
| <b>H2</b> | <b>72</b>      |
| <b>I</b>  | <b>130</b>     |
| <b>I2</b> | <b>63</b>      |
| <b>L</b>  | <b>238.5</b>   |
| <b>LB</b> | <b>208.5</b>   |
| <b>N2</b> | <b>53</b>      |
| <b>PM</b> | <b>105</b>     |
| <b>R</b>  | <b>187.5</b>   |
| <b>R2</b> | <b>102</b>     |
| <b>T</b>  | <b>60</b>      |
| <b>TM</b> | <b>16</b>      |
| <b>TT</b> | <b>48.8</b>    |
| <b>Z</b>  | <b>245</b>     |



# DESIGN



# DESCRIPTION

The motor is designed for use in industrial applications. It features a robust cast iron housing and a fan-cooled motor. The motor is available in various power ratings and voltages. The motor is designed for long service life and high efficiency.

Technical drawing of the motor.

Technical drawing of the motor.

Technical drawing of the motor.

Technical drawing of the motor.