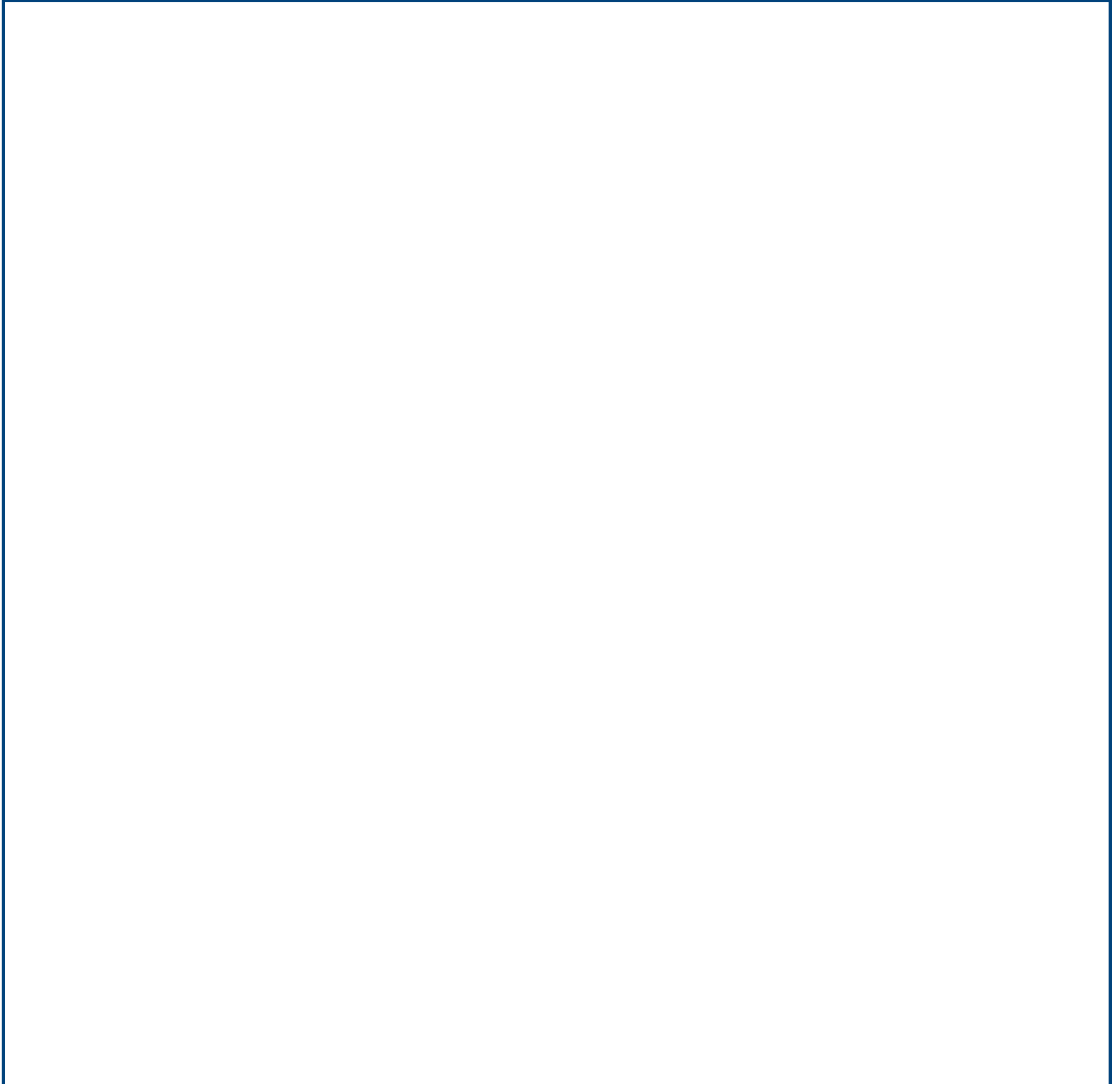


ç | È | Ì | Á | È | Ì | D | H | H | È | F | È | I | Á | È | æ | K | S | { | O | { | [| ç | æ | ã | È | ~

T U V U Ü Ö Ö W S V U Ü K N M R V - 0 4 0 / 0 9 0

{ | ç | ! | ^ | à | ~ | \ | ç | ! | Á | [| à | , | 5 | b | ^ | Á | Ç | Í | Î | Ó | Í | D

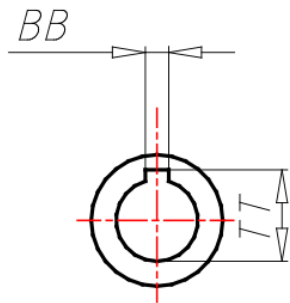
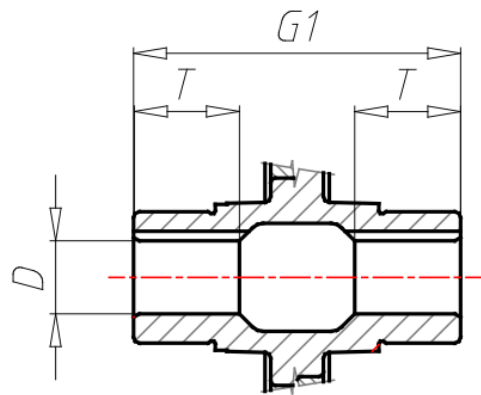
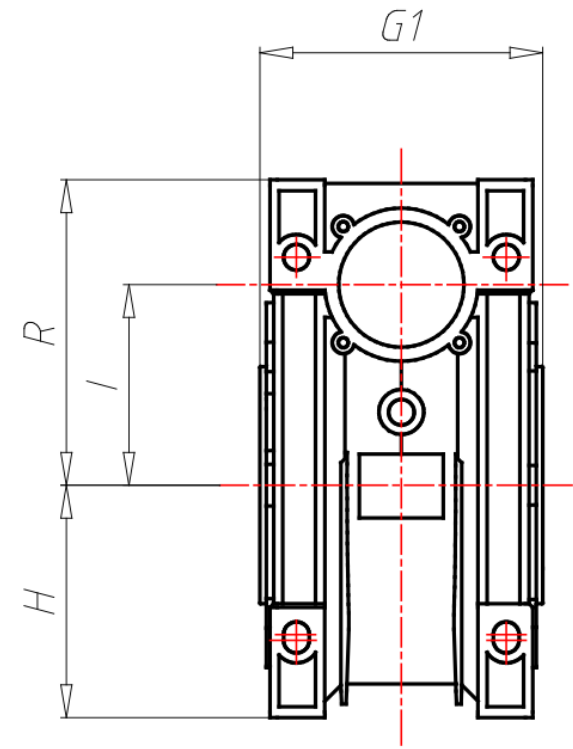
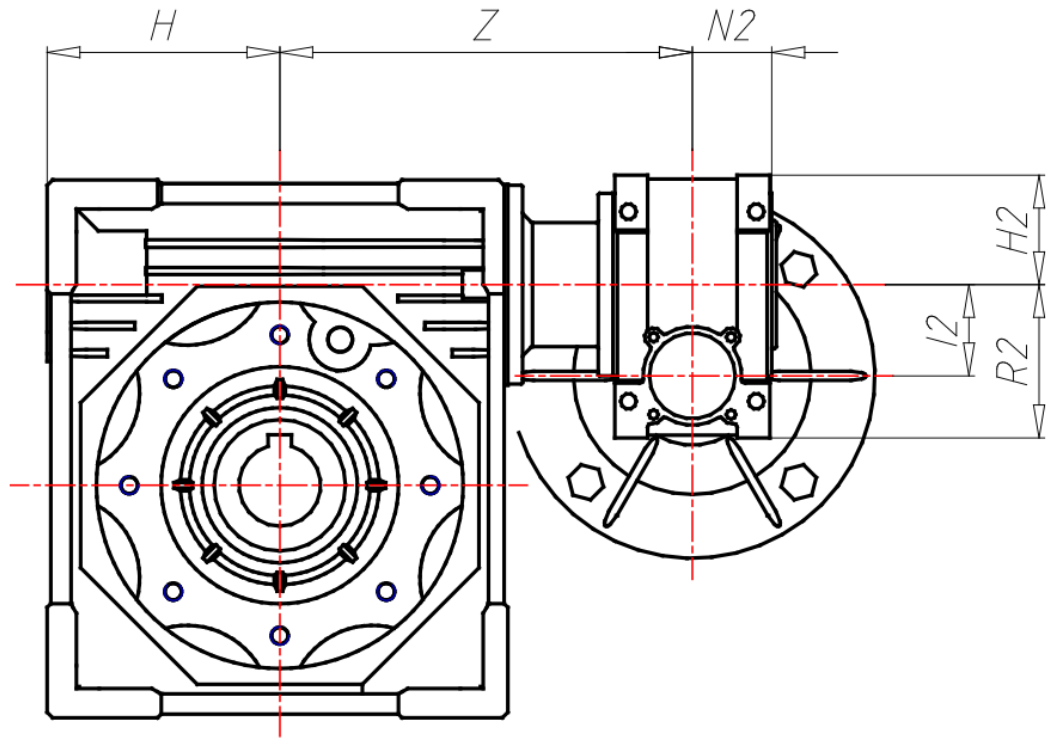
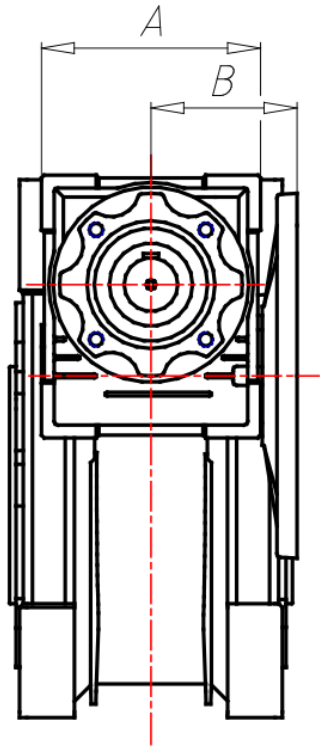
WIDOK 3D



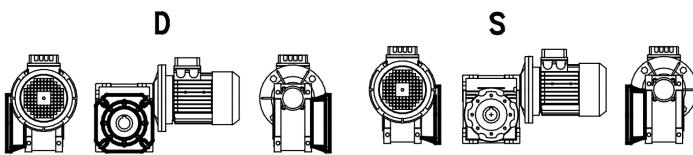
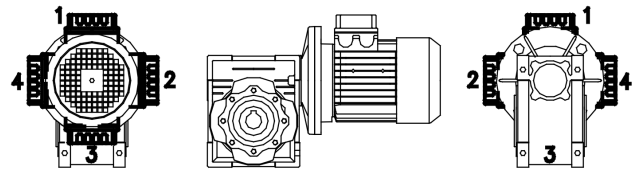
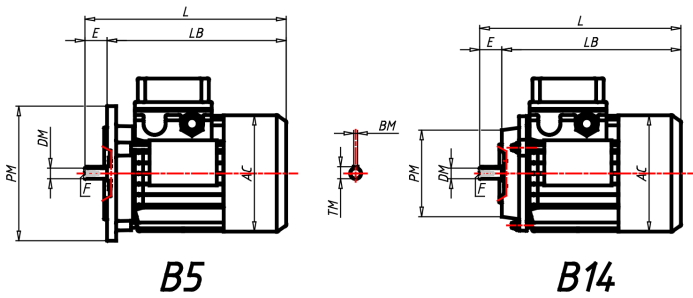
ÖÖË ÒÁÒÔÏ ÒÛÏ ÒÁÏ ÏÏÏ

GR Size	040-090
ES Execution	AS1
PAM Input PAM flange	56 B5
ACU1 Output hole shaft gear unit 1 (d)	18
VB1 Double input shaft gear unit 1	NO
ACU2 Output hole shaft gear unit 2 (d)	35
VB2 Double input shaft gear unit 2	NO
TFU Output flange gear unit 2	NO
DFU Output flange dimension gear unit 2 (d)	-
PFU Output flange position gear unit 2	-
AL2 Output hole shaft gear unit 2 (d)	No
PAL Output shaft position gear unit 2	-
CAP Cover gear unit 2	No
TIP Motor/Inverter Motor	T-Three phase
GRA Motor size	056
RAF Cooling	IC411-Self-Ventilated
FC Motor execution	B5
ALI Supply	-
GIRI Speed Range	-
POTE Power Group	-
CTRL Manual Adjustment Control	-
MODU Expansion modules	-
TF Break type	-
AF Brake power supply	-
COP Terminal box cover	Aluminium
CVE Fan cover	Default
MOR Pos. terminal box	1
A	100
AC	-
B	70

BB	10
BM	-
D	35
DM	-
E	-
F	-
G1	140
H	103
H2	50
I	90
I2	40
L	-
LB	-
N2	36.5
PM	120
R	135
R2	71.5
T	45
TM	-
TT	38.3
Z	184.5



DESIGN



DESIGN

Ö [Á^*~ |æ&ñ ài[ç, Á [ç |^á\ ç |5, Á ç • ð Áã Áæñ, } ä äÖæ^ Á&@ æ }^ Á æ&@æ { æ Á Á!, ä æ&@æ }^ &@K

@ç KDeñ ^à•^•ç{ È |Ð

@ç KDeñ, } ä æñ |Ð

@ç KDeñ, } ä æñ { È |Ð

@ç KDeñ, } ä æñ † |Ð